

Prophetstown Lab I & II Prairie Plant Key

PRAIRIE GRASSES * *planted species*

* Big Bluestem
Andropogon gerardii
"turkey-foot" inflorescence



* Little Bluestem
Schizachyrium scoparium



* Indian Grass
Sorghastrum nutans



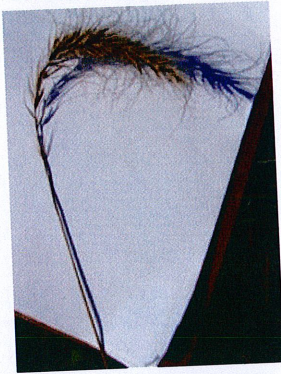
* Side Oats Grama
Bouteloua curtipendula



PRAIRIE GRASSES (con'd)

October

Canada Wild Rye
Elymus canadensis



October

Green Foxtail
Setaria viridis



WOODY TREES & SHRUBS (all photos from October)

Maple
Acer sp.



Black Walnut
Juglans nigra




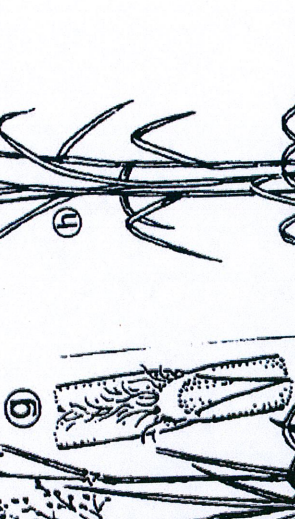
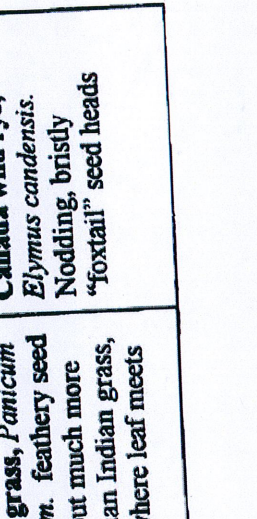

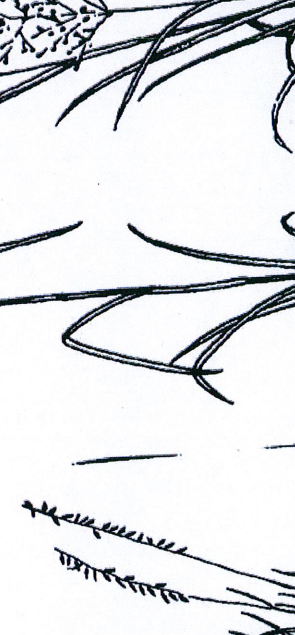
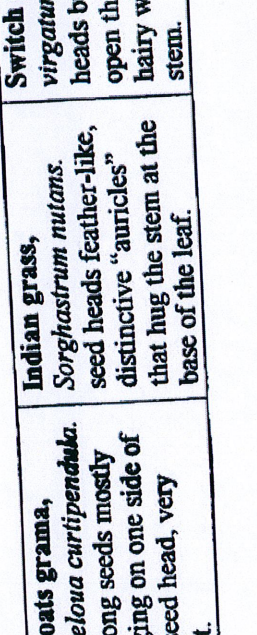
Elm
Ulmus sp.



Mulberry
Morus sp.
Leaves are
extremely
variable!

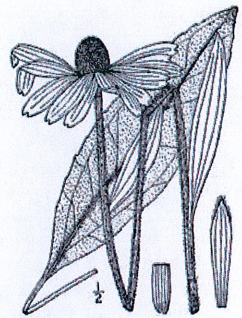
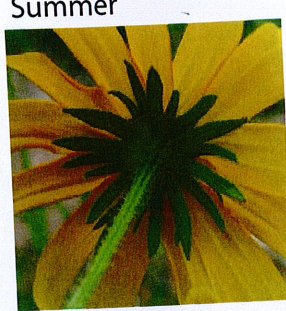


Native grass species seeded at Prophetstown Prairie (drawings are approximately to scale)

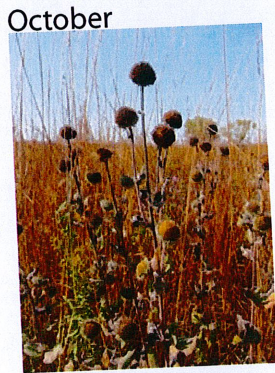
	<p>big bluestem, <i>Andropogon gerardii.</i> "turkey-foot" seed heads, very tall.</p>		<p>little bluestem, <i>Schizachyrium scoparium.</i> small, fuzzy seeds on top half of stems, which often appear reddish.</p>		<p>side-oats grama, <i>Bouteloua curtipendula.</i> 1/2" -long seeds mostly hanging on one side of the seed head, very short.</p>		<p>Indian grass, <i>Sorghastrum nutans.</i> seed heads feather-like, distinctive "auricles" that hug the stem at the base of the leaf.</p>		<p>Switch grass, <i>Panicum virgatum.</i> feathery seed heads but much more open than Indian grass, hairy where leaf meets stem.</p>		<p>Canada wild rye, <i>Elymus canadensis.</i> Nodding, bristly "foxtail" seed heads</p>
---	--	--	---	---	---	--	---	---	---	--	--

PRAIRIE FORBS

* Black-Eyed Susan
Rudbeckia hirta
 note hairy stem
 (2nd photo) and shape
 of structure under
 inflorescence



Downy Sunflower
Helianthus mollis
 soft, fuzzy stem and leaves;
 key distinguishing trait is the
 small, densely-bunched leaves
 (called sepals) underneath
 inflorescence



* Green Headed Coneflower
Rudbeckia laciniata
 note smooth stem;
 one distinguishing trait is the
 distinct leaves under the
 inflorescence (middle photo)



Tall Tickseed
Coreopsis tripteris
 seeds have a pair
 of small horn-like
 structures (last photo)



note seed

PRAIRIE FORBS (con'd)

Yellow Coneflower
(Gray-Headed Coneflower)
Ratiba pinnata
Inflorescence looks like
a smooth, ovular cone

Summer



<http://www.allendaseed.com/pictures.html>



* Showy Goldenrod
Solidago speciosa

October



October



Late summer



* American Senna
(Wild Senna)
Senna hebecarpa
note pinnate leaf

Summer



* Queen Anne's Lace
Daucus carota

October



Summer



Summer



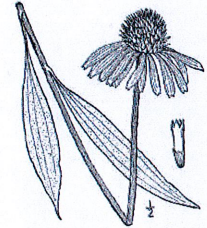
PRAIRIE FORBS (con'd)

* Purple Coneflower
Echinacea purpurea

October



Mid- to late summer



* Canada Tick Trefoil
Desmodium canadense
red strip on stem

Summer



Summer



* Bergamot
Monarda fistulosa
square stem; leaves smell
like mint when crushed;
flowers gone by october

October



October



Midsummer



* Lavender Hyssop
Agastache foeniculum
leaves smell like licorice
when crushed

Summer



PRAIRIE FORBS (con'd)

Heath Aster
Aster pilosus
note small leafy bristles under flowers
forming a conical structure
(middle photo)

October



Daisy fleabane
Erigeron annuus
no bristle-like leaves under flowers;
structure under flowers is rather flat
and less conical than Heather Aster
(middle photo)

Summer



Summer



Horseweed (Mare's Tail)
Conyza canadensis
may look like a tall brown stick
by October

Summer



Summer



New England Aster
Baptisia lactea
only purple daisy-like flower
visible at this time of year

October



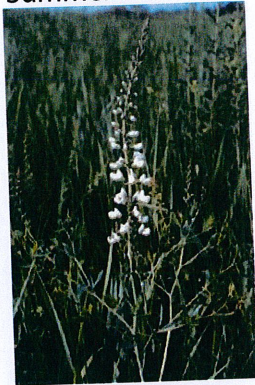
October



PRAIRIE FORBS (con'd)

White False Indigo
Baptisia lactea

Summer



White Vervain
Verbena urticifolia

Summer



Common Milkweed
Asclepias syriaca
toxic milky sap
in leaves and stem when
broken;
"spikes" on pod;
in pod stage in
October

October



Pods (and seeds)

October



Late summer



* Butterflyweed
Asclepias tuberosa
smooth pod, no milky sap,
hair stem

October



Pods (and seeds)

Summer



Stem (hairy)

PRAIRIE FORBS (con'd)

Giant Ragweed
Ambrosia artemesifolia

October



flowers



seeds

Common Ragweed
Ambrosia artemesifolia
note distinct fruit shape

October



leaf (but can vary)



fruits